



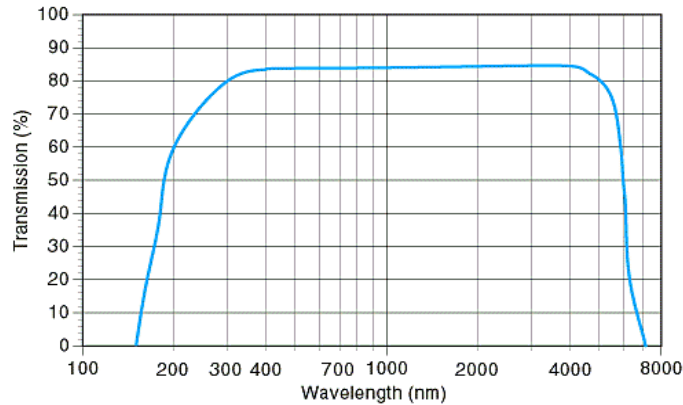
TRIAD TECHNOLOGY INC.

Spectroscopy Solutions

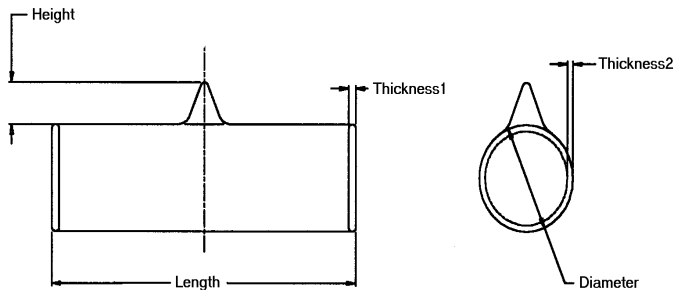
SAPPHIRE WINDOW REFERENCE CELL TECHNICAL INFORMATION

12mm Sapphire Window Cell:

Our sapphire windowed cells are ideal for experiments in the IR and Near IR wavelength range. The sapphire windows have an excellent transmission over the range of wavelength from 200nm to 6.0 microns.



The sapphire cells are 12mm in diameter. The standard cell length is 50mm. The typical lead-time for standard cells is 2 week. Sapphire cells can be filled with different materials.



Window Material:	Sapphire
Cell Diameter:	12mm
Body Thickness:	1.5mm
Fill Stem Height:	<10mm
Window Angle:	0°
Window Type:	Flat
Window Thickness:	3.2mm



TRIAD TECHNOLOGY INC.

Spectroscopy Solutions

**SAPPHIRE WINDOW REFERENCE CELL
TECHNICAL INFORMATION**

Vapor Cells

Part Number	Vapor	Dimensions
TT-K-25x75-P-V	Potassium K	12 x 50mm
TT-NA-25x75-P-V	Sodium Na	12 x 50mm
TT-H2O-25x75-P-V	Water H ² O	12 x 50mm

Gas Cells

Part Number	Gas	Dimensions
TT-CO2-9x150-600T-Q-G	Carbon Dioxide CO ₂	12 x 75mm
TT-NO2-9x150-200T-Q-G	Nitrogen Dioxide NO ₂	12 x 75mm
TT-CH4-9x75-200T-Q-G	Methane CH ₄	12 x 50mm
TT-C2H6-9x75-200T-Q-G	Ethane C ₂ H ₆	12 x 50mm
TT-C2H4-200-G-x	Ethylene C ₂ H ₄	12 x 50mm